



RWD

PRODUCT CATALOG

For Pathological Diagnosis
and Cellular & Molecular Biology Research

Company Profile

RWD Life Science specializes in life science, animal healthcare, and medical devices. Founded in 2002 and headquartered in Shenzhen, our products and services cover more than 100 countries and regions. We are dedicated to contributing our wisdom and effort to the improvement of the quality of life. Moreover, we are firmly committed to being a globally-advanced science enterprise.

Oriented by customer demands and motivated by excellent talents, RWD is continuously establishing long-term partnerships with domestic and foreign universities. We also invest in our R&D to achieve innovation in our products, technologies, and service. We aim to provide solutions with higher quality to our customers.

Based on the Chinese market and serving customers around the world, RWD has not only achieved a strong reputation and advantage in the fields of respiratory anesthesia, neuroscience research, animal behavior research, surgery and nursing, and pathological analysis, but also gained constant trust and support from our domestic and foreign customers after our efforts during the past 20 years.

Looking into the future, we shall adhere to the core values of quality, integrity, responsibility and contribute to the advancement and development of pre-clinic and medical clinic applications.



THE DEVELOPMENT COURSE

2002-2006

- Founded in Shenzhen, China
- Launched a self-developed brain stereotaxic instrument
- Products were sold to the US and European markets

2007-2014

- Launched the first micro-drug delivery system in China, breaking the monopoly of foreign technology
- Launched a global brand strategy by officially registering the “RWD” trademark in the US and China.
- Awarded the China “National High-tech Enterprise” credential.
- Launched animal anesthesia machines & ventilators
- Launched veterinary clinical animal diagnosis and treatment solutions, enter the field of animal health

2015-Now

- Achieved market targets for products sold in 100 countries around the world.
- Helping with talent cultivation:
Launched the “RWD Basic Medicine (Notable) Scholarship” to well-known universities in China
launched a donation program for animal anesthesia machines for colleges and universities
- Developed integrated solutions for brain science research
 - The market share of stereotaxic instruments in China as the first
- Developed solution for cell research.
 - the market share of animal anesthesia machines in China among the top rank
- Authenticated as “Guangdong Life Science Analytical Instruments Technology Research Center”
- Launched microtomes, entering the field of clinical medicine
 - Launched the first Automated Stereotaxic Instruments in China
- Serviced for 17000+ global customers
 - The No. of employee attain the scale of 600+

CATALOGUE

01 Minux® Rotary Microtomes

05 Minux® Cryostats

07 Single Cell Suspension Dissociator

09 Magnetic Microbeads Cell Separation Products

13 CO₂ Incubator

15 Automated Cell Counters

20 Centrifuge

25 Western Blot Imager

27 M2-96G Gradient Thermal Cycler

Minux[®] Rotary Microtomes

Rotary microtome is a device for paraffin section, widely used in medical and biological research. It is used for pathological diagnosis in clinical, and used for research at the tissue and cell level.



Features

Visual pointer

- » Designed with the visual pointer on precise positioning system, easy to adjust the sample to the target angle, reducing trimming and sample waste.
- » Adjust multiple devices to the same angle easily and quickly.

The side knobs

- » Integrated with the machine, ergonomic design, make operation more comfortable and coordinated.
- » The sample feeding speed can be adjusted freely between 0-1800µm/s, more choice and more efficient.
- » Durable military-grade devices, service life is more than 20 million times.

Automatic section

- » It is stable and maintains slice consistency.
- » No extra skills required, easy to complete the operation.
- » Some specimens such as embryos and brains need to be cut for hundreds of pieces. It is hard for you, but easy for automatic section.

Easily removable waste tray

- » With magnetic function, easy to disassemble and install.
- » Special coating materials tray, easy to clean up, shorten the cleaning time to a few seconds.

Technical Parameters

Parameters	Model	S700 Semi-Automated	S700A Fully-Automated
Section thickness setting range: 0.5 - 100 μm		✓	✓
Trimming section thickness setting range: 1 - 800 μm		✓	✓
Electric coarse feed speed: 0-1800 $\mu\text{m/s}$		✓	✓
Specimen retraction: 0-250 μm		✓	✓
Specimen feed: 28mm, vertical stroke: 70mm		✓	✓
Specimen orientation: X/Y axis 8°, Z axis 360°		✓	✓
Maximum specimen size: 60*50*40 mm		✓	✓
Automated mode and manual mode switch			✓
Emergency stop button			✓
Cut window function			✓
Slice speed selection			✓
Four slice modes: Int., Single, Cont., Multi.			✓
Pedals(optional)			✓

Order Information

Cat No.	Product Description
S700A	Fully-Auto rotary microtome, include a box of blades(50 pcs)
S700	Semi-Auto rotary microtome, include a box of blades(50 pcs)
S700-F3	Universal clamp
S700-F4	Standard clamp
S700-F7	Blade holder assembly
S700-F9	Blade holder upper bracket
S700-F10	Easy-clean waste tray
S700A-F3	Foot Switch for Rotary & Cryostat Microtome (optional)

Disposable Microtome Blades-low profile



► Features:

- Sharp and durable, cost-effective
- For rotary microtomes and cryostats use
- Packed in a push-out distribution box for easy access

Order Information

Cat No.	Product Description
PB-2	Disposable Microtome Blades, 80mm*8mm*0.25mm, 50 pcs, for paraffin and frozen section

Minux[®] Rotary Microtomes (S710/S712)



Features

Precise sampling system

- Precise cross roller bearings and screw rod, combined with a five-phase high-resolution stepper motor and a Link block made of aviation aluminum, form a high-precision sampling system to ensure section quality.
- Stable gantry structure design, high hardness alloy transfer, improve the rigidity of the host, and the hard tissue section is still accurate.

Precise knife holder

- The position change is extremely small after changing the knife edge by moving sideways.
- Scales on the knife holder to determine the best position of the blade holder.

Dual hand wheel locking system

- Handwheel lock on top of the handwheel, safe to replace the sample. Any position lock to brake the handwheel in any position.
- Sample advance and retreat, trim/section conversion, thickness adjustment, position memory and half-knife function can be realized by using separate control panel.

Hand wheel balance at any position

- The handwheel can be stopped at any position, making it more secure to use

Knife guard device

- The knife guard covers the full length of the blade to avoid potential injury during operation.



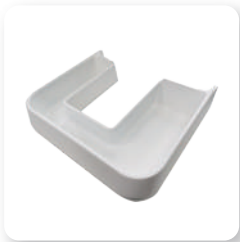
Rapid positioning

- Unique visual pointer, visible angle adjustment. Sample positioning is faster and more precise.
- Adjust multiple devices to the same angle easily and quickly.



Convenient operation

- The small handwheel injection method is used with the side knob to adjust the slice thickness, which is ergonomically designed and the operation is more comfortable.
- The single-turn sampling distance of the small handwheel can be adjusted to meet individual needs.
- The torque at any position is lower than 2.5 kgf·cm, the operation is easy, and it is easy to use all day.



Easy to clean

- With magnetic function, easy to disassemble and install.
- Large capacity, special coating waste tray, easy to clean up, shorten the cleaning time to a few seconds.

Information backtracking

- With historical record system, operation and alarm logs are shown on 5-inch touch screen, to query the microtome usage and facilitate information tracking.



Universal clamp
S700-F3



Standard clamp
S700-F4



Blade holder assembly
S700-F7



Blade holder upper bracket
S700-F9



Separate Control Panel
S710-F1

Technical Parameters

Parameter	Model	S710	S712
Section thickness range: 0.5 - 100 μm		√	√
Trimming section thickness range: 1 - 800 μm		√	√
Electric coarse feed: 0 - 3000μm/s adjustable		√	√
Specimen retraction: 0 - 250μm adjustable		√	√
Horizontal feed: 28mm		√	√
Vertical stroke: 70mm		√	√
Specimen orientation: X/Y axis 8°		√	√
Maximum specimen size: 60*50*40 mm		√	√
W x D x H: 490*430*315mm		√	√
Machine Weight:30kg		√	√
Rock mode		√	√
Position memory function		√	√
Separate Control Panel		Option	Standard

Minux[®] Cryostats

Cryostat is a device for rapidly cooling tissue to a certain hardness under low temperature conditions and then slicing. It is a quick and easy method. Hospitals mainly use it for rapid pathological diagnosis during surgery. Researchers use it for preparation of biological tissue samples for in situ hybridization, immunohistochemistry, etc.



Features

Stable

- **Stable temperature:** advanced temperature control system, small temperature fluctuations. Even if the window is opened for more than 1 hour, the temperature is still stable.
- **Stable slice quality:** high-precision cross rail and screw, five-phase high-resolution sampling motor and horizontal sampling slider made of aviation aluminum, form a precise sampling system to ensure stable slice quality.

Safe

- **UVC disinfection:** the latest low-temperature UVC disinfection technology. The irradiation intensity can effectively kill bacteria and viruses, disinfect the inner surface and the air of the cabinet, and reduce the risk of contamination by infectious materials.
- **Waste liquid management system:** a waste liquid volume display on the touch screen. There are reminders of full bottle and not in place to prevent waste liquid from flowing out and contaminating the ground.

Efficient

- **Efficient operation:** the color touch screen, with a joystick that integrates coarse sample feeding, trimming and section switching, and slice parameter adjustment, constitutes an efficient operating system.
- **Quick positioning:** precise positioning system with $\pm 8^\circ$ visual pointer, easy to adjust the specimen clamp to the target angle, reducing trimming and sample waste.
- **Automatic sleep and wake-up:** saving energy, simplify manual operation and reduce waiting time.
- **Sample installation and marking:** buckle design, convenient installation and firm fixation. The unique label design of specimen discs makes it easy to record and identify each sample to prevent confusion.
- **Efficient and thorough defrosting:** automatic defrosting for cryochamber, specimen head, quick-freeze shelf, more thorough. For manual defrosting, there are different parts to choose to improve efficiency.



Technical Parameters

Parameters	Model	FS800 Semi-Automated	FS800A Automated
Section thickness setting range: 0.5 - 100 μm		✓	✓
Trimming section thickness setting range: 1 - 800 μm		✓	✓
Electric coarse feed speed: 0-3000 $\mu\text{m/s}$ adjustable		✓	✓
Specimen retraction: 0-250 μm		✓	✓
Specimen feed: 28mm		✓	✓
Vertical stroke: 70mm		✓	✓
Specimen orientation with visual pointer: X / Y axis 8°, Z axis 360°		✓	✓
Number of refrigerated sites: 15		✓	✓
Number of fast cooling sites: 2		✓	✓
Cryochamber temperature range: 0°C~-35°C		✓	✓
Automatic and manual defrosting		✓	✓
Automatic and manual UVC disinfection		✓	✓
Automated mode and manual mode switch			✓
Emergency stop button			✓
Cut window function			✓
Slice speed selection			✓
Four slice modes: Int.,Single,Cont., Multi.			✓
Pedals(optional)			✓

Order Information

Cat No.	Product Description
FS800	Semi-Auto, with UVC disinfection, specimen cooling system
FS800A	Fully-Auto, with UVC disinfection,specimen cooling system, auto section function

*Most popular cryostat with individually controlled temperature settings on both the cryochamber and the specimen holder.

Single Cell Suspension Dissociator

RWD Single cell suspension dissociator uses tissue processing tubes, tissue dissociation kits, and built-in optimization programs for preparing high-activity single-cell suspension and tissue homogenate. The preparation of single-cell suspension with high cell viability can be completed within 15-30 minutes, which makes the experiments more reproducible. 4 or 8 independent operating channels and heating jackets can automate the processes and improve the efficiency of tissue processing. It is widely used in single-cell sequencing, primary cell culture, fluorescence activated cell sorting, cell therapy, and other research fields.



DSC-410



DSC-810



DSC-200

Product Characteristics

Intelligent

- Pre-defined standard processes and customized processes supported.
- Processes can be imported and synchronized via USB ports.

Gentle

- Stable motor speed ranges from 0 to 4000 rpm.
- Customized tissue dissociation kits and tissue processing tubes can ensure cell viability and reduce experimental losses.

Safe

- Multiple alarms guarantee the safety of both operators and samples.
- Fully sealed tube prevents contamination of cells.

Efficient

- 4 or 8 independent channels work simultaneously for different tissue processing.
- Heating jackets are available for fully automated sample preparation.
- Capable of single-cell suspension and tissue homogenate.

Technical Parameters

Model	DSC-200	DSC-410	DSC-810
Channels	2	4	8
Temperature	37°C		
Speed	0~4000rpm		
Sample Volume	20~4000mg		
Buffer Volume	0.3-10mL		
Screen	7 inches.touch screen		
User Programs	Default programs+Custom programs+500storable programs		
Weight	9 kg	10.3 kg	18 kg
Dimensions(W*D*H)	215*380*190 mm	215*380*190 mm	415*381*256 mm

Order Information

Cat. No.	Product Description	Specification
DSC-200	Single Cell Suspension Dissociator	2 channels
DSC-410	Single Cell Suspension Dissociator	4 channels
DSC-810	Single Cell Suspension Dissociator	8 channels
SCT-25	Tissue Processing Tube	25 pcs/box
SCT-100	Tissue Processing Tube	100 pcs/box
HJ-400	Heating Jacket	4 pcs/box

Consumables

Tissue Processing Tube

- Ethylene oxide(EO) sterilized.
- Independent packaging make it convenient for storage and use.

Order Information:

Model	SCT-25	SCT-100
Sample volume	20-4000 mg	
Buffer volume	0.3-10 mL	
Dimensions	35*89 mm	
Package	25pcs/box	100pcs/box



*The tissue processing tubes of RWD are not available in the USA market

Enzymatic Digestion Kit

- Targeted optimization of enzymatic hydrolysis formula can ensure high cell viability
- Preserving cell surface epitopes leads to no effect for downstream experiments



Order Information:

Cat. No.	Product name	Number of reactions
DHTE-5001	High Activity Tumor Tissue Enzymatic Digestion Kit (Mouse)	50T
DHNBE-5002	High Activity Neonatal Brain Enzymatic Digestion Kit (Mouse and Rat)	50T
DHABE-5003	High Activity Adult Brain Enzymatic Digestion Kit (Mouse and Rat)	50T
DHGT-5004	High Activity General Tissue Enzymatic Digestion Kit	50T
DHTEH-2505	High Activity Tumor Tissue Enzymatic Digestion Kit (Human)	25T
DHDR-5006	High Efficiency Debris Removal Kit	50T
DHIE-5007	High Activity Intestine Tissue Enzymatic Digestion Kit (Mouse)	50T
DHBTE-2508	High Activity Brain Tumor Enzymatic Digestion Kit	25T
DHWSE-2509	High Activity Whole Skin Enzymatic Digestion Kit (Mouse)	25T
DHAE-5010	High Activity Adipose Tissue Enzymatic Digestion Kit (Mouse and Rat)	50T
DHME-5012	High Activity Muscle Tissue Enzymatic Digestion Kit (Mouse and Rat)	50T
DHNE-2511	High Efficiency Nuclei Extraction Kit	25T
DHHE-2515	High Activity Hepatocyte Extraction Kit (Mouse and Rat)	15T
DHUTE-2516	High Activity Umbilical Cord Enzymatic Digestion Kit (Human)	25T

Magnetic Microbeads Cell Separation Products

RWD cell separation products include self-developed magnetic microbeads cell separation kits and cell separation columns, which can obtain target cells with high purity and high viability through simple operation. Nano-sized magnetic beads do not need elution, and the separated cells can be directly used in downstream experiments such as flow cytometry, cell culture, single-cell sequencing, etc.



Cell Separation Kit



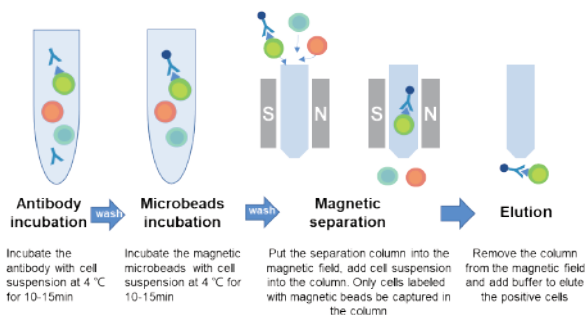
LarSep Columns



LSC Separator and stand

Application field

Immunology research
Oncology research
Neuroscience
Stem cell research
Cell therapy



Ordering Information

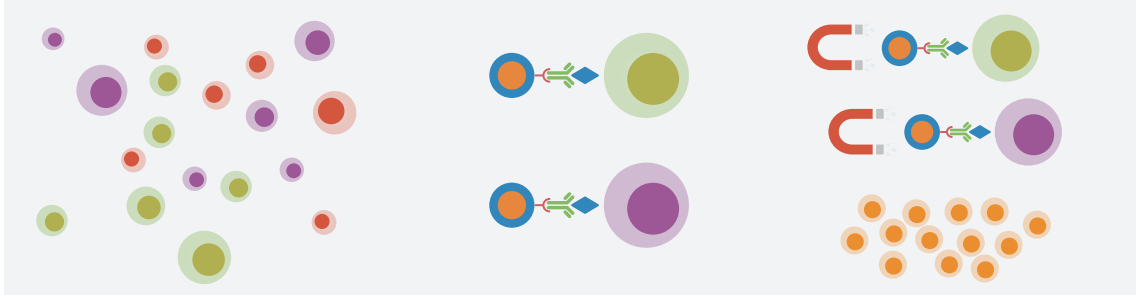
Cat NO.	Product name	Size	Capacity
K1301-10	Mouse CD3+ Cell Separation Kit	1ml*2	for 1*10 ⁹ total cells
K1302-10	Mouse CD4+ Cell Separation Kit	1ml*2	for 1*10 ⁹ total cells
K1303-10	Mouse CD8+ Cell Separation Kit	1ml*2	for 1*10 ⁹ total cells
K1304-10	Mouse CD45+ Cell Separation Kit	1ml*2	for 2*10 ⁹ total cells
K1305-20	Mouse CD19+ Cell Separation Kit	1ml*2	for 2*10 ⁹ total cells
K1306-10	CD11b+ (Microglia) cell separation Kit	1ml*2	for 1*10 ⁹ total cells
K1201-10	Human CD3+ Cell Separation Kit (RUO)	1ml*2	for 1*10 ⁹ total cells
K1202-10	Human CD4+ Cell Separation Kit (RUO)	1ml*2	for 1*10 ⁹ total cells
K1203-10	Human CD8+ Cell Separation Kit (RUO)	1ml*2	for 1*10 ⁹ total cells
K1204-10	Human CD14+ Cell Separation Kit (RUO)	1ml*2	for 1*10 ⁹ total cells
K1205-10	Human CD45+ Cell Separation Kit (RUO)	1ml*2	for 1*10 ⁹ total cells
K1206-10	Human CD19+ Cell Separation Kit (RUO)	1ml*2	for 1*10 ⁹ total cells
K1207-10	Human NK Cell Isolation Kit (RUO)	2ml*2	for 1*10 ⁹ total cells
HCSC-25	LarSep Columns (25pcs/box)	25pcs/box	/
HCSC-10	LarSep Columns (10pcs/box)	10pcs/box	/
LSC-S1	LSC Separator (single channel)	1pcs	/
SS01	Separation stand	1pcs	/
CSAK-01	Cell Separation assembly kit (single channel)	1set	Including LarSep Columns (25pcs), LSC Separator (single channel) 1pcs, Separation stand 1pcs



Nano-Beads Cell Separation Platform

Column Free

Product Principle



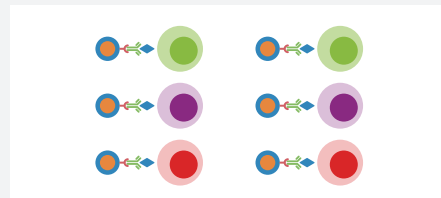
Nano-Bead Cell Separation Platform (Column Free), by adding biotin-antibodies to PBMC or single cell suspension to label non-target cells (negative selection), and then binding streptavidin magnetic beads to labeled non-target cells. The target cells without contact with magnetic beads can be separated quickly, easily and in large numbers.



Product Component

Nano-Beads

- Combined with streptavidin
- Good biocompatibility
- Degradable and not affect the cell state
- Good stability & dispersion



Cell Separation Kits

- Labeled with antibody and Nano-Beads
- Rich in species, including various human and mouse antibodies
- High purity & good viability

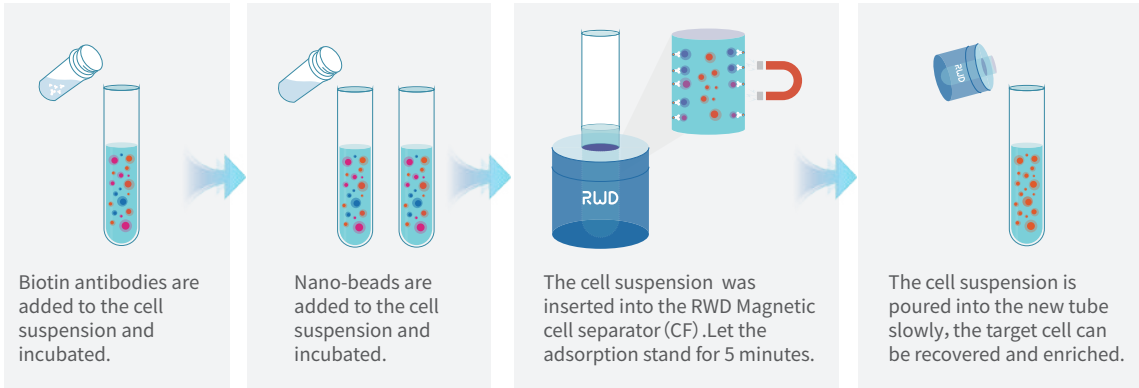


Magnetic cell separator (CF)

- Single channel
- High intensity magnetic field With 5ml round bottom tube



Experimental Process



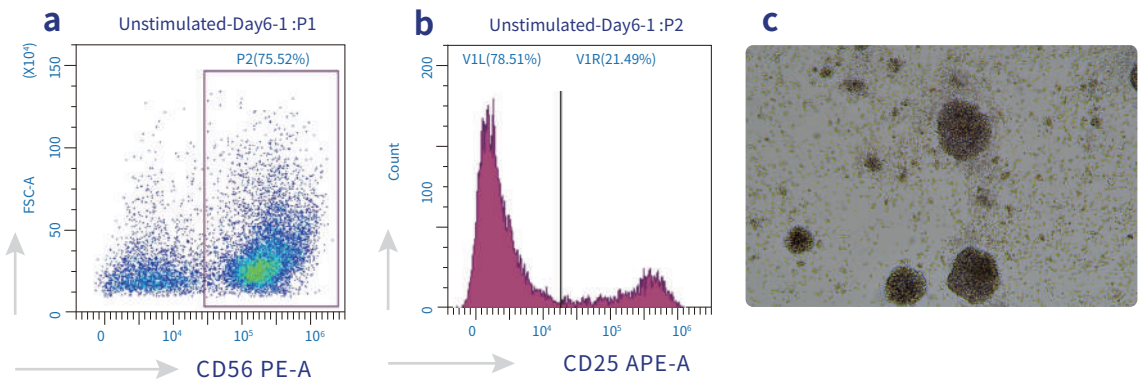
- Nano-Beads — mild & low stimulation
- Magnetic adsorption — strong & sensitive
- Column free — fast sorting & low cost
- Negative sorting — get truly untouched cells
- Wide application — direct cell experiments

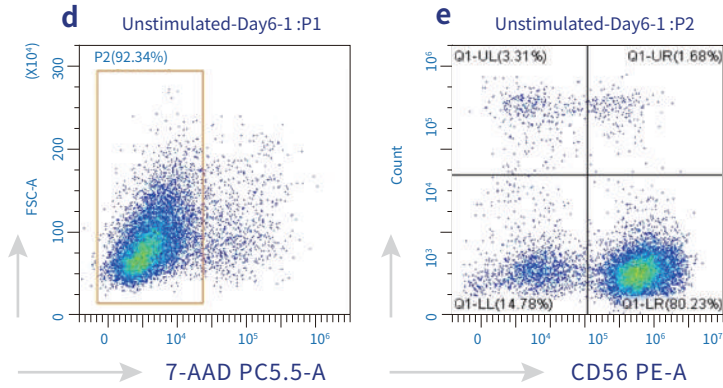


Data Presentation

Human NK Cell isolation Kit-CF (RUO)

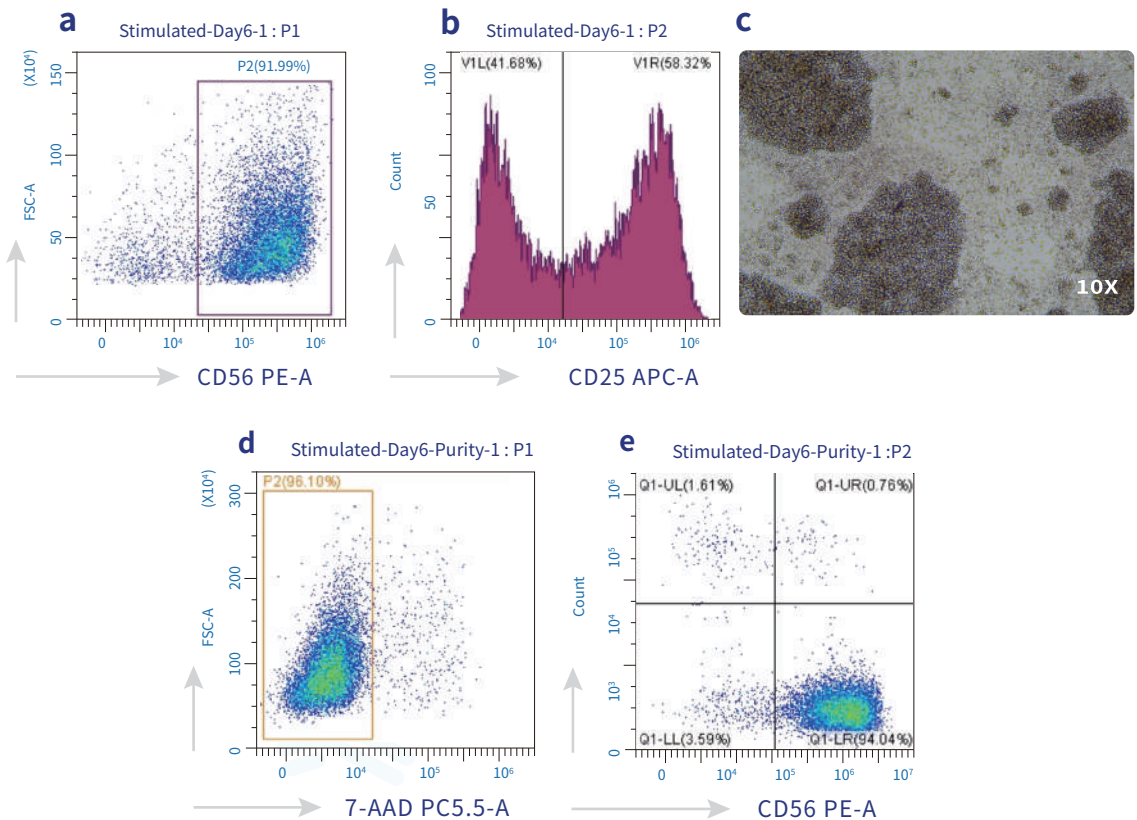
- Enriched human NK cells were cultured after 6 days without activation ,which analysis by flow cytometry.
- CD25 expression of enriched human NK cells were cultured after 6 days without activation.
- Cell culture state of enriched human NK cells were cultured after 6 days without activation.
- Cell activity of enriched human NK cells were cultured after 6 days without activation.
- After using Human NK Cell isolation Kit-CF (RUO) again, cell purity of enriched human NK cells were cultured after 6 days without activation.





Data Presentation

- Enriched human NK cells were cultured after 6 days activated by IL-2, which analysis by flow cytometry.
- CD25 expression of enriched human NK cells were cultured after 6 days, which activated by IL-2.
- Cell culture state of enriched human NK cells were cultured after 6 days, which activated by IL-2.
- Cell activity of enriched human NK cells were cultured after 6 days, which activated by IL-2.
- After using Human NK Cell isolation Kit-CF (RUO again, cell purity of enriched human NK cells were cultured after 6 days activated by IL-2.



CO₂ Incubator

Provide A More Suitable Environment for Cell Culture

D180 CO₂ incubator provides a more suitable culture environment for cells by controlling temperature, CO₂ concentration precisely and by maintaining a high relative humidity (rH). It is an indispensable cell culture tool in the fields of stem cell research, immunology research, neurobiology research and cancer research.



Product Characteristics

Stable environment for cell culture

- Accurate IR sensor monitors the CO₂ concentration change.
- Six-sided air jacket heating system ensures fast heating.
- Optional humidity probe to monitor real-time humidity changes.

Contamination control of inner chamber

- High efficient sterilization by 140°C dry heat.
- In-chamber HEPA to filter the microorganism.
- Easy cleaning with coved corners and removable shelves design.

Intelligent operation

- 7-inch touchscreen controller for real-time display.
- Automatic data record of 7 days curve display.
- External USB port for fast and convenient data export..

Multiple alarm system

- Internal and external door open overtime alarm.
- Abnormal inner cavity core parameters alarm.
- High temperature sterilization over temperature alarm.

Convenient and flexible design

- Handle design enables a comfortable door opening.
- Optional bracket with casters for convenient moving of the chamber.
- Less consumables in cavity for easy cleaning.



Stainless steel liner & water pond



High efficiency filtration system

Technical Parameters

Temperature	Control & Range	$\pm 0.1^{\circ}\text{C}$ @ 37°C , 5°C above ambient to 50°C
	Heating Method	Air jacket
	Uniformity	$\pm 0.3^{\circ}\text{C}$ @ 37°C
	Alarm Setting	Customized, Upper limit: $(T+0.1) \sim (T+5.0)$; Lower limit: $(T-0.1) \sim (T-5.0)$
	Sensor	Pt1000 Platinum thermistor
	Controller	PID
	Readability & Setability	0.1°C
CO ₂ Concentration	Sterilization Method	140°C dry heat sterilization
	Control & Range	$\pm 0.1\%$ @ 5% , 0-20%
	Sensor	Heat-resistant infrared (IR) sensor
	Inlet Pressure	1.0 bar (recommended)
	Uniformity	$\pm 0.3\%$
	Readability & Setability	0.10%
Humidity	Alarm Setting	Customized, Upper limit: $(C+0.1) \sim (C+1.0)$; Lower limit: $(C-0.1) \sim (C-1.0)$
	Water Pond Volume	3.8 L
	Display	1% RH
Shelves	Dimensions	48.7×46.1 cm
	Surface Area	224.5 cm ²
	Number (Standard & Max)	4 ; 17
Size & Weight	Interior Volume	188 L
	Interior Dimensions	51.0(W)×54.7(D)×67.5(H) cm
	Exterior Dimensions	69.5(W)×67.0(D)×97.0(H) cm
	Net Weight	110 kg

Order Information

Device Options	Order no.	Description
CO ₂ gas inlet pipe package	D180-F01	Connect cylinders to equipment
Horizontal shelves with bracket	D180-F02	Carrier for culture dishes
Water Pond	D180-F03	Holding water to increase humidity
HEPA filter	D180-F04	5.5 inch HEPA filter for inner air filtration
High efficiency filter	D180-F05	For air filtration at sampling port
Stacking racks	D180-F06	For stacking and fixing of equipment
Stacking Stand with castors	D180-F07	For supporting equipment and movement

Device Options	Order no.	Description
CO ₂ Incubator with Humidity monitoring	D180	volume 188L; 140°C setrilization; humidity sensor; voltage 200~240VAC, 50Hz, 5A
CO ₂ Incubator with Humidity monitoring	D181	volume 188L; 140°C setrilization; humidity sensor; voltage 100~120VAC, 60Hz, 10A
CO ₂ Incubator without Humidity monitoring	D180	volume 188L; 140°C setrilization; without humidity sensor; voltage 200~240VAC, 50Hz, 5A
CO ₂ Incubator without Humidity monitoring	D181	volume 188L; 140°C setrilization; without humiditysensor; voltage 100~120VAC, 60Hz, 10A

Automated Cell Counters

RWD Automated Cell Counter adopts Trypan Blue staining method, intelligent image recognition and advanced optical imaging technology to achieve accurate and automatic cell analysis. The algorithm can identify both live and dead cells within 9 seconds. Information such as cell counts, viability, diameter can be obtained by just one-click. With fluorescence cube, C100&C100-Pro can display images in BF and FL channels simultaneously and clearly present cell counts and cell morphology. In order to meet the needs of cell therapy and biopharma, the data management and software system of C100-Pro fully conforms to FDA 21 CFR Part 11. It is an optimal device for cell analysis in cell therapy, biopharmaceutical, immunology and vaccine development, tumor research, stem cell and metabolism research.

BF



C100-SE



C100

FL



Product Characteristics

High accuracy

- The self-developed algorithm can identify clustered cells.
- Intelligently cell marks contribute to precise cell recognition.
- RBC counting.
- Low autofluorescence and high-transmit filter enable clear imaging.

Time-saving

- User-friendly UI and built-in user guide interfaces ensure easy operation.
- Up to 1000 counting results can be stored. No need another device for extra storage.

User-friendly

- Autofocus and auto exposure.
- Powerful computing capability ensures high efficiency.

Compact design

- Compact size fits into different placements.
- Removable modular FL cubes allow easy switches among various scenes.

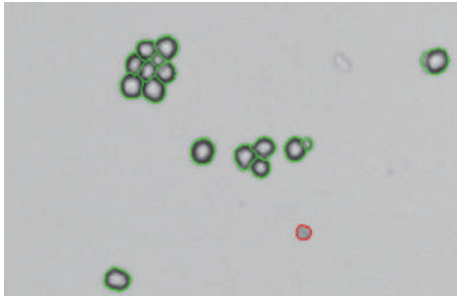
Accessories and consumables



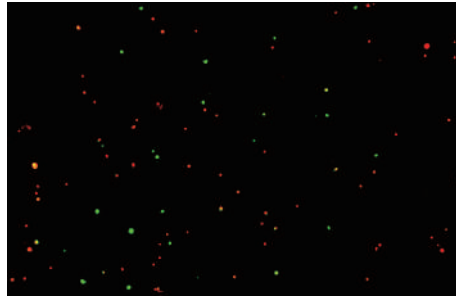
Disposable Cell Counting Slide



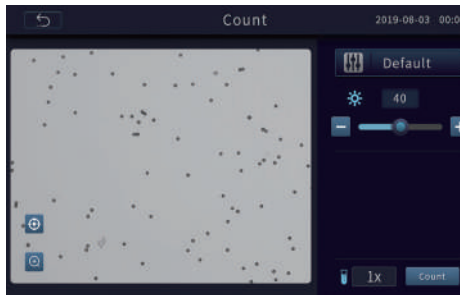
FL Cube



Clustered cell recognition algorithm



Clear fluorescence imaging



Pre-dilution calculator



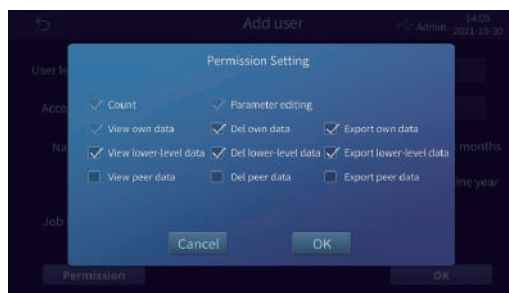
Cell splitting calculator

C100-Pro Automated Cell Counter

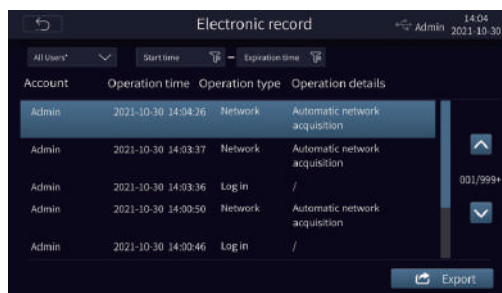


Product Characteristics

- FDA 21 CFR Part 11 compliance
- Ensuring data security with account login and account permissions setting.
- Ensuring data integrity with electronic signature and electronic recording.
- Data transmission via LAN and server.



User manage



Electronic records

Product Characteristics

Parameters	Description		
Model	C100-SE	C100	C100-Pro
Optional fluorescence application	N/A	<ul style="list-style-type: none"> ● (Ex : 375/28nm ; Em: 460/50nm) ● (Ex : 480/30nm ; Em: 535/40nm) ● (Ex : 540/25nm ; Em: 620/60nm) 	
Amplification Factor	2.5×, 5.0 Megapixel		
Focus Method	Manual focusing & Autofocusing		
Counting Area	2.15 mm×1.62 mm		
Cell Type	Cell lines, stem cells, primary cells, pollens, beer yeast		
Cell Size Range	4-60 μm (Optimal: 7-60 μm)		
Cell Concentration Range	10 ⁴ -10 ⁷ cells/mL		
Cell counting Time	Less than 9s		
Historical Data Storage	1000 counting reports and images at most		
Languages	Chinese and English		
Dimensions	212 mm(W)* 264 mm(H)* 165 mm (D)		
Weight	3.0kg	3.2kg	3.5kg

FL Cube	Excitation	Emission	General Dyes
FL Cube-01	375/28nm	460/50nm	DAPI, Hoechst, BFP
FL Cube-02	480/30nm	535/40nm	Acridine Orange (AO), Calcein-AM, Alexa fluor 488, SYBR Green, FITC, GFP
FL Cube-03	540/25nm	620/60nm	Propidium Iodide (PI), DsRed, dTomato, RFP

Order Information

Cat No.	Product Description
C100-SE	Automated Cell Counter (BF)
C100	Automated Cell Counter (BF + FL)
C100-Pro	Automated Cell Counter (BF + FL, FDA 21 CFR Part 11 Compliance)
FL Cube-01	● (Ex : 375/28nm ; Em: 460/50nm)
FL Cube-02	● (Ex : 480/30nm ; Em: 535/40nm)
FL Cube-03	● (Ex : 540/25nm ; Em: 620/60nm)
DS-50	Disposable Slide (50 pcs/box)

C200FL Fluorescent cell counter



Features

More precise, more stable

- No need to focusing and imaging is clearer
- Preset parameters can be used directly without manual operation
- Intelligently cell marks for precise cell recognition
- Low autofluorescence and high-transmit filter enable clear imaging

Smarter and more efficient

- APP style program, one click counting
- 6-channel counting slide, automatic sampling
- Optional 1-3 counting area, 5s/sample
- 500G storage, one click export multiple formats of data

Safer and easier to use

- FDA 21 CFR Part 11 compliance
- Multiple built-in help interfaces, easy to use
- Compact size fits into different placements

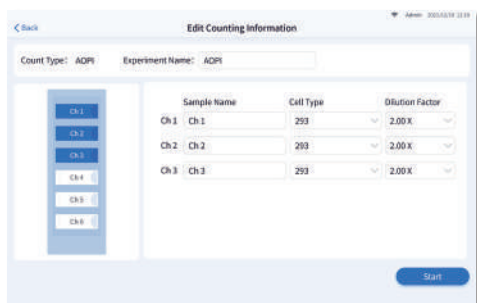
Product Interface



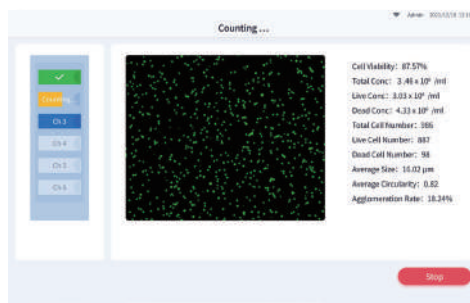
- APP style program, one click counting



- APPs can be managed in group



- 6-channel automatic sampling



- Real time display of counting results

Consumables

6-channel disposable counting slide for C200FL counter

- One-piece cover plate, no cover glass required
- Disposable consumables, no manual cleaning
- Disposable design to avoid biological safety hazards
- Separate and easy-to use packaging

Model	DS-66
Chamber volume	20μL
Number of chambers	6
Dimensions of slide	75mm*25mm*2.1mm
Dimensions of chamber	16.2mm*6.2mm*0.2mm
Package	50PCS/box



Technical Parameters

Model	C200FL
Optical parameters	5 × , 5.0 Megapixel
Fluorescence parameters	AO/GFP: Ex: 480/30 nm , Em: 535/40 nm PI/RFP: Ex: 525/30 nm, Em: 590 LP
Cell size range	3-180μm (Optimal: 5-30μm)
Cell concentration range	1 × 10 ⁴ - 3 × 10 ⁷ /mL
Counting area	1.72mm × 1.3mm (Optional 1-3 zones)
Cell counting time	5s/sample (bright field)
Storage	500 G
Dimensions	310mm(W) * 420mm(H) * 270mm(D)
Weight	11 kg
Languages	Chinese and English
Display	10.1-inch LCD touch screen
Consumables	6-channel counting slide, 20μL/sample

Centrifuge

M1324R Refrigerated Microcentrifuge

RWD microcentrifuges M1324R and M1324 simplify centrifugation, which can work stably and quietly at the maximum speed of 15800rpm. Optional rotors for different needs (PCR tubes, 1.5/2 mL EP tubes, etc.). Small footprint and low noise, touch screen interaction, all your user-defined preset programs can be called by one click. The refrigerated microcentrifuge M1324R will still make sure the stable temperature centrifugation of samples at -10°C~40°C even at the highest speed.

All the functions are designed according to your needs, which is the best choice for laboratory separation.



M1324R Microcentrifuge

Product Characteristics

Efficient

- Quick precooling. From RT to 4 °C in only 8 minutes.
- The seamlessly fit for inner cavity winding technology enables high-efficient energy transfer.
- Adjustable 10 ACC/DEC ramps to satisfy different customers' needs.

Stable and Safe

- High-density foaming technology benefits energy-saving and heat-preservation.
- Standard aerosol-tight rotor with aerospace-grade aluminum alloy withstands high temperature sterilization and avoids biohazards.
- Qualified ultrasonic non-destructive test, Schenck balancing test and extreme blasting test to protect personnel safety.
- Multiple Real-time rotor dynamic balancing monitoring system and alarm functions guarantee safe operation.

Simple

- Combination of touch screen and function keys provides quick and convenient setting and parameter use.
- 12 custom programs enable immediate centrifuge operation in multiple scenarios.
- Magnetic condensed water collection pan to eliminate inner water accumulation.
- Mechanical lock design for the centrifuge lid enables easy opening and closing.
- Quick-Lock rotor, closes with only a 1/4 turn.

Compact

- One-pipette-width compact design.
- Lid hinge design with suspending hovering optionally.



M1324 Ventilated Microcentrifuge



M1324 Microcentrifuge

Product Characteristics

Excellent and Efficient

- Unique heat dissipation material and duct design to enhance heat dissipation performance.
- Double cooling system to ensure stable centrifugation of samples at the highest speed.
- Running vibration amplitude $\leq 1\mu\text{m}$ to maintain stable operation.

Stable and Safe

- Standard aerosol-tight rotor with aerospace-grade aluminum alloy withstands high temperature sterilization and avoids biohazards.
- Qualified ultrasonic non-destructive test, Schenck balancing test and extreme blasting test to protect personnel safety.
- Real-time rotor dynamic balancing monitoring system and multiple-imbalance alarm functions guarantee safe operation.

Intelligent and Quiet

- Dual noise control system with intelligent three-gear fan control, full load at maximum speed noise <50dB(A).
- Combination of touch screen and function keys provides quick and convenient setting and parameter use.
- Use EPP foam material to reduce noise pollution.

Simple and Practical

- Quick-lock rotor closes with only 1/6 turn for easy and secure sample handling.
- 10 acceleration and deceleration ramps meet the centrifugation needs of different samples.
- 48 custom programs enable immediate centrifuge operation in multiple scenarios.
- Automatic lid opening design, easy and quick to take samples.



Technical Parameters

Parameters	M1324R	M1324
Max. Speed	15800 rpm	
Max. RCF	23444 × g	
Max. Capacity	5mL × 10	
ACC/DEC Ramps	10/10	
Display	Touch screen	
Program	12	48
Temperature Control	-10°C to 40°C	
Noise Level	<54dB (A)	<50dB(A)
Dimension (W*H*D)	304 × 305 × 518mm	262 × 286 × 385mm
Weight (with rotor)	35kg	22.5kg

Order Information

Model	Product Description	MaximumSpeed (rpm)	MaximumRCF(xg)
M1324	Ventilated Microcentrifuge(With M-F24QG rotor)	15,800	23,444
M1324R	Refrigerated Microcentrifuge (M-F24QG rotor)	15,800	23,444
M-F10QG	Aerosol-tight Lid , 10X5 mL tube quick-lock rotor	15,800	23,444
M-F2QG	Aerosol-tight Lid , 24X1.5/2.0 mL tube quick- lock rotor	15,800	23,444
M-F24Q	24X1.5/2 mL tube quick-lock rotor	15,800	23,444
M-F24G	Aerosol-tight Lid , 24 X1.5/2 mL tube rotor	15,800	23,444
M-F24	24X1.5/2 mL tube rotor	15,800	23,444
M-F4PCR	4XPCR tube rotor (32×0.2 ml)	15,800	20,653
M-F18Kit	18 X Spin column rotor	15,800	20,095

M1416R High-Speed Benchtop Refrigerated Centrifuge

RWD High-Speed Benchtop Refrigerated Centrifuge provides intelligent centrifugation, adapting various applications from micro to medium throughput with a speed up to 18,000 rpm (31,152×g). Offer a broad selection of rotors and adaptors (swing-bucket rotors and fixed-angle rotors) to meet different customers' needs. The capacity of M1416R ranges from 24 x 2mL to 4 x 400mL, and the plate rotor also accommodates PCR and deep-well plates. In addition, equipped with a 7-inch touch screen, M1416R provides visual operation and a personalized account management system ensuring efficient and quality control.



Product Characteristics

Abundant accessories

- Multi-purpose device equips with various rotors and adaptors.
- Self-locking rotors enable non-tools required installation and removal and exchange in 3 seconds.
- Fixed-angle rotor equipped with the quick-lock lid, closes with only a 1/6 turn.

Various guarantees

- Multi-level alarm reminders for fast dealing.
- Static rotor identification function for maximum operational safety.
- Precision assembly motor with special bearings ensures the precision of speed $\leq \pm 1\text{rpm}$, amplitude $\leq 0.01\text{mm}$.

Ergonomic operation

- Scheduling reservations provide the pre-cooling function for organized experiments.
- Acceleration and braking ramps setting achieves stable centrifugation.
- Built-in simple introduction for quick operation.

Multipurpose function

- An intuitive touch screen shows key parameters clearly.
- View the centrifuge health with one click.
- Front USB port for easy and quick data transfer.
- More than 100 pre-program setting storage with customized steps achieves continuous centrifugation.



Technical Parameters

Parameters	Description
Swing-out Rotor	
Maximum Capacity	M-S4-400-P, 4*400mL
Maximum Speed	M-S4-200-P, 5500rpm
Maximum RCF	M-S4-200-P, 5580 x g
Fixed-angle Rotor	
Maximum Capacity	M-F6-100CF, 6*100mL
Maximum Speed	M-F24-2QG, 18,000rpm
Maximum RCF	M-F24-2QG, 31,152 x g

Parameters	Description
Details	
Temperature range	-10°C to +40°C
Noise	56dB(A)
Acceleration/Deceleration ramps	9 /10
Program Storage	100 programs with the ability to do step programming
Dimension (W*H*D)	620 × 400 × 670 mm
Weight without rotor	96.5kg

Order Information

Model	Product Description
M1416R	High-Speed Benchtop Refrigerated Centrifuge (Without Rotor)

Rotor Information

Model	Product Description	Maximum Speed (rpm)	Maximum RCF(xg)
M-S4-400-P	4*400mL Swing-out rotor	5000	4696
M-S4-400-CP	4*400mL Swing-out rotor (incl. 4*M-A4-50 and 4*M-A9-15 adaptors)	5000	4696
M-S4-200-P	4*180mL Swing-out rotor 4*180mL Swing-out rotor (incl. 4*M-A1-50 and 4*M-A5-15 adaptors)	5500	5580
M-S2-DWP-P	2*3 Standard 96-well plate (2*1 DWP)	4000	2272
M-F24-2QG	Aerosol-tight Lid , 24X2 mL tube quick- lock rotor	18,000	30,000
M-F30-2QG	Aerosol-tight Lid , 30X2 mL tube quick- lock rotor	15,200	25,830
M-F48-2QG	Aerosol-tight Lid , 48X2 mL tube quick- lock rotor	15,200	25,314
M-F18-5QG	Aerosol-tight Lid , 18X5 mL tube quick- lock rotor	15,000	24,652
M-F6-50QG	Aerosol-tight Lid , 6X50 mL tube quick- lock rotor	12,100	20,133
M-F6-100QG	Aerosol-tight Lid , 6X100 mL tube quick- lock rotor	12,100	20,133
M-F8-50CF	8X50 mL tube carbon fiber rotor	14,500	24,446
M-F14-50CF	14X50 mL tube carbon fiber rotor	10,000	17,105
M-F6-100CF	6X100 mL tube carbon fiber rotor	15,000	24652
M-F30-15C	30X15 mL tube clinic rotor	5650	4997
M-A1-225	Suitable for M-S4-400 rotors, 1*225mL bottle	5000	4696
M-A4-50	Suitable for M-S4-400 rotors, 4*50mL tub	5000	4696
M-A9-15	Suitable for M-S4-400 rotors, 9*15mL tubes	5000	4696
M-A14-10	Suitable for M-S4-400 rotors, 14*10mL blood collection	5000	4696
M-A19-7	Suitable for M-S4-400 rotors, 19*5/7 mL blood collection	5000	4696
M-A34-2	Suitable for M-S4-400 rotors, 34*2mL tubes	5000	4696
M-A-15	Suitable for M-F6-50QG rotor, 6*15mL adapters	12,100	20,133
M-A-7	Suitable for M-F30-15C rotor, 10*5/7ml blood vessel collection adapterrs	5650	4997

Western Blot Imager

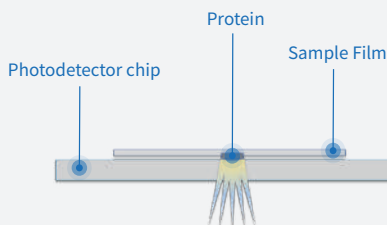
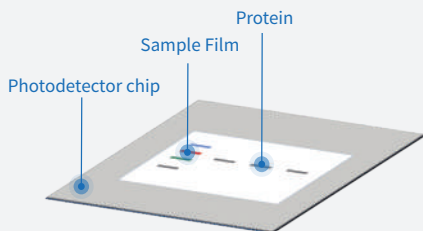
RWD qTouch Western Bolt Imager consists of a main unit and a computer, and is a contact imaging device with a large 150 cm² photoreceptive chip. It is capable of non-destructively collecting light signals from Western Blot, Southern Blot, and Northern Blot. The device has a wide quantitative linear range, capable of capturing both strong and weak signal samples, and the imaging speed is extremely fast, with most samples being imaged within 1 second. The software that comes with it is comprehensive, supporting automatic and manual exposure as well as gray level analysis of Western Blot bands, and is also capable of processing and exporting analysis results of up to 40 images. In addition, the device also has multi-user management functions, allowing users to set personalized file saving paths to ensure data security and convenience. Despite its powerful functions, the device is compact in size, occupies little space, and is easy to transport and carry.



Product Characteristics

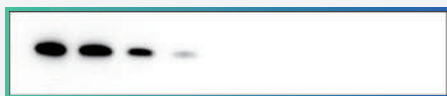
High Sensitivity

- Imaging with direct contact between the photodetector chip and the sample membrane.
- Reduces light signal loss by more than 99%, capturing extremely weak signals.
- Improves sensitivity and quantitative range by two orders of magnitude.
- Three sensitivity levels for adjustment to fit a wider range of samples.

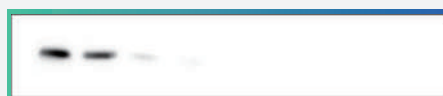


Rapid Imaging

- Versatile exposure modes, with a transmission speed greater than 1000Mbps for rapid image output.
- Most samples can achieve high-quality imaging within 1 second.
- Significantly reduces the time required for collecting low-abundance samples.
- Custom image algorithms ensure high-quality images.



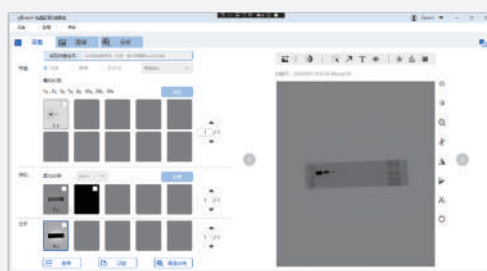
RWD qTouch



Cold CCD imaging device

Intelligent Operation

- The operation software is easy to use, feature-rich, and stable.
- The device has a cover closure darkroom detection feature to ensure image quality.
- It has built-in image processing and analysis capabilities, allowing for one-click band recognition.
- A multi-level account system manages the data, with separate data storage for each account.



Technical Parameters

Parameters	Description
Imaging Area Size	150cm ²
Device Power	Powered by a DC12V adapter
Device Interface	USB3.0
Transfer Speed	Greater than 1000 Mbps
Sensitivity	At the pg level
Dimensions (W*H*D)	291*226*53 mm
Weight	<3.8kg
Host Compatibility	Windows10,64bit

Software Configuration	Description
Expose Mode	Automatic/Manual
Sensitivity Adjustment	Low Sensitivity/Standard/Ultra-High Definition in three levels
Imaging Algorithm	Self-developed image correction algorithm
Image Processing	Image cropping, rotation, inversion, contrast adjustment, etc.
Data Processing	High-precision intelligent band grayscale analysis
Image Output	Export in multiple resolutions: 300dpi, 600dpi, 1200dpi
Data Management	Multi-level account system automatically generates an image database
Other Features	3D image viewing, overexposure warning, etc.

M2-96G Gradient Thermal Cycler

The M2-96G provides precise temperature control and an intelligent user operating system to achieve rapid and specific amplification of target DNA fragments. With temperature gradient function, 12 groups of gradient can be realized at one time to optimize PCR protocol.

It is widely used in molecular biology, microbiology, genetics, cell biology, food science and agronomy to carry out experimental research such as molecular cloning, gene expression analysis, genotype identification, sequencing, and pathogenic microorganism analysis.



Product Characteristics

Intelligent and efficient linear gradient function

- 12 linear gradients in the same run allow to optimize the ideal annealing temperature.
- Temperature and time cycle can be incremented or decremented to realize different experiments like Touchdown PCR and Long PCR experiments.

Fast ramping and precise temperature control

- Fast ramp rate of up to 6 °C/s to realize efficient PCR runs.
- Long-life Peltier elements for temperature accuracy and uniformity.

Data visualization for easy operation

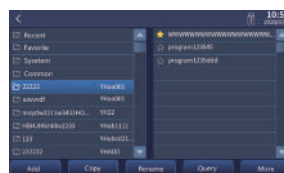
- 7 inch touch screen enables intuitive and quick programming.
- Personalized account management system provides organized programs and unwanted changes.

Thoughtful multifunctional design

- Processes can be imported and synchronized via USB ports and achieve multi-machine collaborative work.
- Capable for PCR experiments and constant temperature incubation function.



Easy access to create a new protocol



Personalized account management system

Technical Parameters

Description	M2-96G
Sample Capacity	96x0.2 ml/0.1ml tubes or 1x96-well plate
Reaction volume	10~100 μ L
Heating block	96-well
Temperature control range of the block	0~100°C
Gradient capability	Yes
Gradient range	30~100°C
Lid temperature range	40~110°C
Temperature accuracy	$\pm 0.25^{\circ}\text{C}$ (35~100°C)
Temperature Uniformity	$\leq \pm 0.35^{\circ}\text{C}$ (After reaching a constant temperature of 95°C for 20s)
Max. heating and cooling rate	6.0°C/s; 4.5°C/s
Average heating and cooling rate	4.5°C/s; 3.5°C/s
Display	7 inch LCD touch screen
Max. amount of storage	2000
Max. number of program cycles	99
Max. number of program steps	64
Inc/Dec temp input range	$\pm 0.1\sim 5^{\circ}\text{C}$
Inc/Dec time input range	$\pm 1\sim 240\text{s}$
Power-off protection	Yes
Interface	RS232, USB, Network ports
Dimensions (W×D×H)	264mm×470mm×259mm
Weight	16.5kg
Power supply	220V/50HZ; 110V/60HZ
Max. power consumption	925W

Order information

Order no.	Description
M2-96G	96-well Gradient thermal cycler

RWD Life Science Co.,Ltd

Add: Building 7A (9th, 19th-20th Floors), Building 7D (9th Floor), Shenzhen International Innovation Valley, Dashi 1st Road, Nanshan District, Shenzhen, Guangdong, China

Web: www.rwdstco.com **E-mail:** rwd@rwdstco.com

RWD Life Science Inc.

Add: 10410 Corporate Drive, Sugar Land, TX 77478, USA

Tel: 1-858-900-5879 **Tech support:** service@rwdstco.com

Copyright ©RWD Life Science Co., LTD. 2025. All rights reserved.

No part of this document maybe reproduced or transmitted in any form or by any means without prior written consent of RWD Life Science Co., LTD.

Trademark Notice

RWD, **RWD** | 瑞沃德, and **RWD** are trademarks or registered trademarks of RWD Life Science Co., LTD.

Other trademarks, product, service and company names mentioned are the property of their respective owners.

General Disclaimer

The information in this document may contain predictive statements including, without limitation, statements regarding the future financial and operating results, future product portfolio, new technology, etc. There are a number of factors that could cause actual results and developments to differ materially from those expressed or implied in the predictive statements. Therefore, such information is provided for reference purpose only and constitutes neither an offer nor an acceptance.

RWD may change the information at any time without notice.